

8

7

6

5

4

3

2

1



**AERIAL PHOTO / SITE DIAGRAM**

**POLAR BEAR FR GEN II 10°**

**PROJECT DETAIL**

WIND ZONE	0,9 KN/m <sup>2</sup>
TERRAIN CATEGORY	III
SEISMIC ZONE	N/A
MODULE TYPE	YINGLI YL-235-255 P-32B
MODULE DIMENSIONS (mm x mm)	990 x 1810
NUMBER OF MODULES	416
MODULE WATTAGE (W STC)	240
SYSTEM SIZE (KW STC)	99,84
SYSTEM WEIGHT (KG)	23918,98
SYSTEM AREA (SQ M.)	1233,12
NUMBER OF ARRAYS	1
ARRAY TILT (DEG)	12
N-S SPACER STICK DIM. (mm)	901
E-W SPACER STICK DIM. (mm)	1853

**PROJECT PART QUANTITIES**

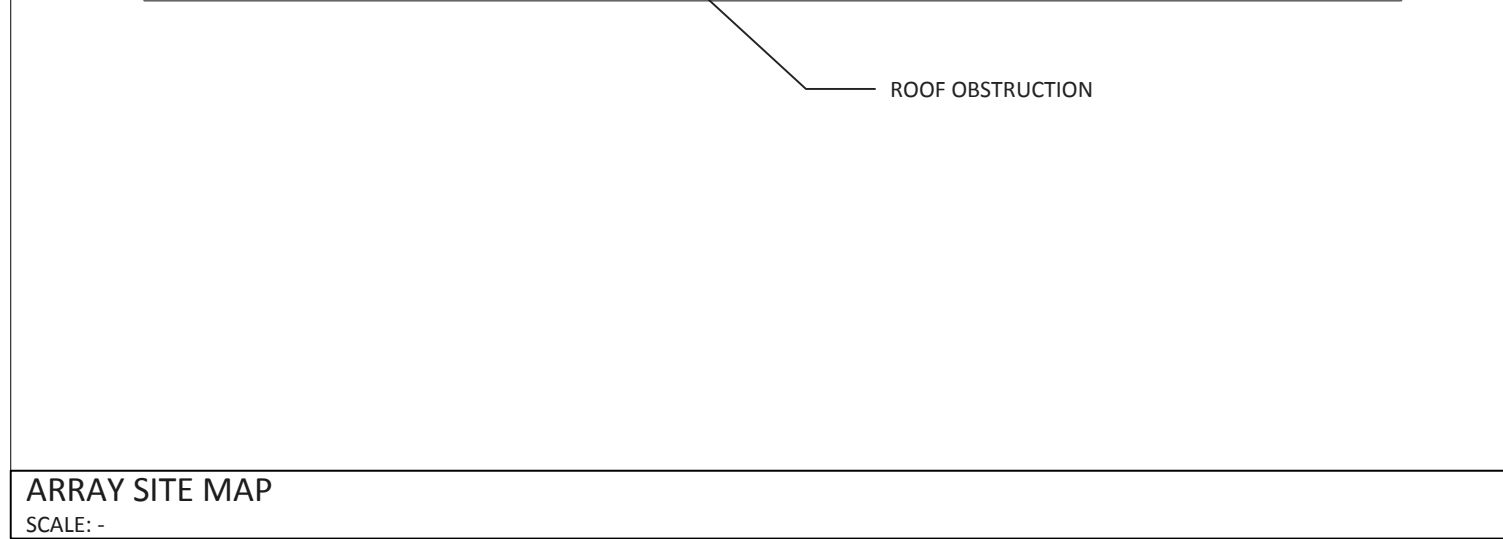
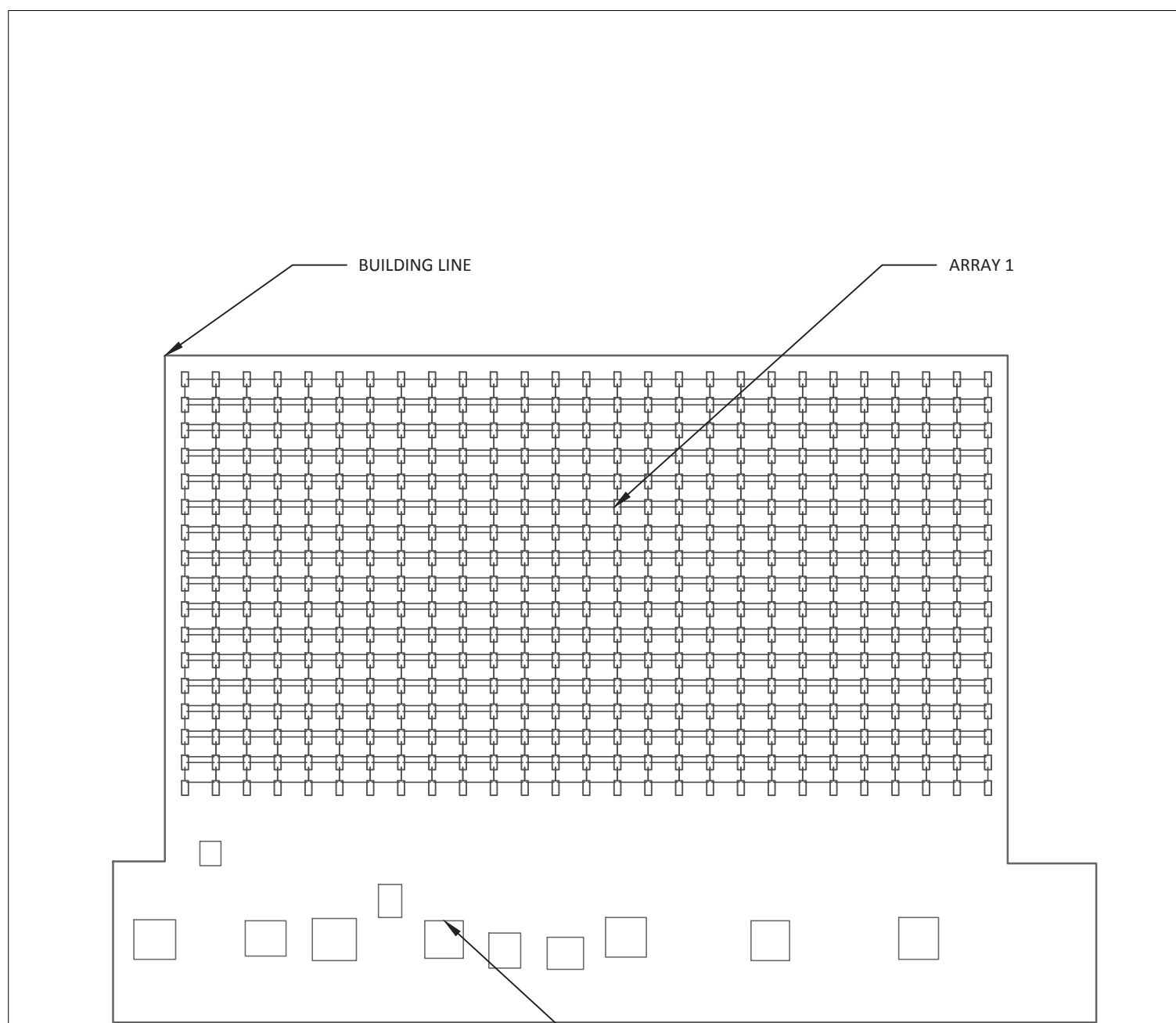
ITEM	PART NUMBER	QTY
<b>CLAW</b>	5010005	1664
ASSY, CLAW-STANDARD, ALUMINUM		
<b>POLAR BEAR SUPPORT</b>	5010062	459
ASSY, SUPPORT, G90 ST, 304SS, POLAR BEAR GEN II 10 DEG-PAD		
<b>SOUTH SUPPORT</b>	N/A	0
N/A		
<b>DEFLECTOR</b>	201010806	416
DEFLECTOR, G90 ST, 1956MM, POLAR/GRIZZLY BEAR GEN II 10 DEG		
<b>DEFLECTOR END PLATE</b>	2000140	16
END PLATE, G90 STEEL, POLAR BEAR / GRIZZLY BEAR GEN II 10 DEG		
<b>MECH. ATTACHMENT</b>	N/A	0
N/A		
<b>TOTAL STONES</b>	3,5 kg	2244

REV	DESCRIPTION	CF	GB	DATE
1	BALLASTED LAYOUT			20.09.2012

AZIMUTH **206,66°**  
  
**panelclaw**  
 PANELCLAW, INC.  
 1600 OSGOOD ST. SUITE 2023  
 NORTH ANDOVER, MA 01845  
 TEL: 978.688.4900  
 FAX: 978.688.5100  
 www.panelclaw.com  
 PREPARED FOR  
**MODAL INOX**  
 PROJECT  
**SPORTHALLE LAUSEN**  
 LOCATION  
**SCHELLIGACKERWEG, 4415 LAUSEN, CH**  
 SCALE: - REV 1 SIZE A4 SHEET 1 OF 2

**GENERAL NOTES:**

- ALL SITE, PROJECT, AND BUILDING DETAILS ARE PROVIDED BY CUSTOMER OR GENERATED VIA SATELLITE IMAGERY FROM INFORMATION PROVIDED BY CUSTOMER. PANELCLAW IS NOT RESPONSIBLE FOR SITE INACCURACIES THAT COULD LEAD TO CHANGES TO THESE DRAWING DETAILS AND ARRAY LAYOUT CONFIGURATIONS. ALL INFORMATION CONTAINED WITHIN THESE DOCUMENTS ARE TO BE FIELD VERIFIED BY CUSTOMER AND INSTALLER. ANY CHANGES OR MODIFICATIONS TO THESE DOCUMENTS, CONTAINED INFORMATION, OR FINAL ARRAY AND MOUNTING SYSTEM INSTALLATIONS MUST BE SUBMITTED TO PANELCLAW AND OTHER PROJECT AUTHORITIES FOR APPROVAL.
- REFER TO AND FOLLOW THE APPROPRIATE PANELCLAW INSTALLATION MANUALS AND PROCEDURES DURING THE INSTALLATION PROCESS. NOT FOLLOWING SUCH PROCEDURES AND METHODS COULD RESULT IN DAMAGE TO THE COMPONENTS OR MAY VOID THE PRODUCT WARRANTY.
- ARRAY SETBACKS: ALL ARRAYS ARE REQUIRED TO BE SETBACK 3.048 METERS FROM ALL ROOF EDGES UNLESS OTHERWISE SPECIFIED AND CALLED OUT ON THE ARRAY DIAGRAMS ON THIS PAGE OR ON ADDITIONAL ARRAY BALLAST PAGES.
- REFER TO THE SPECIFIC ARRAY BALLAST SHEETS FOR BALLASTING REQUIREMENTS BASED ON THE PROVIDED SITE INFORMATION.
- THE MODULE FOOTPRINT DETAIL INCLUDES THE ASSEMBLY OF (1) MODULE MOUNTED TO (4) SUPPORTS AND (1) DEFLECTOR. DIMENSIONS REFLECT THE CRITICAL MEASUREMENTS OF A MODULE-MOUNTING SYSTEM ASSEMBLY. DIMENSIONS DO NOT REFLECT DIRECT MODULE LENGTH AND WIDTH.
- ALL STONES UTILIZED ON THIS PROJECT MUST COMPLY WITH DIN EN 1338.
- COEFFICIENT OF FRICTION ASSUMED TO BE 0,5 VERIFY ON ROOF
- NOT FOR CONSTRUCTION. FOR PLANNING PURPOSES ONLY. ALL DIMENSIONS HAS TO BE PROOVED ON THE ROOF.



**ARRAY SITE MAP**  
SCALE: -

8

7

6

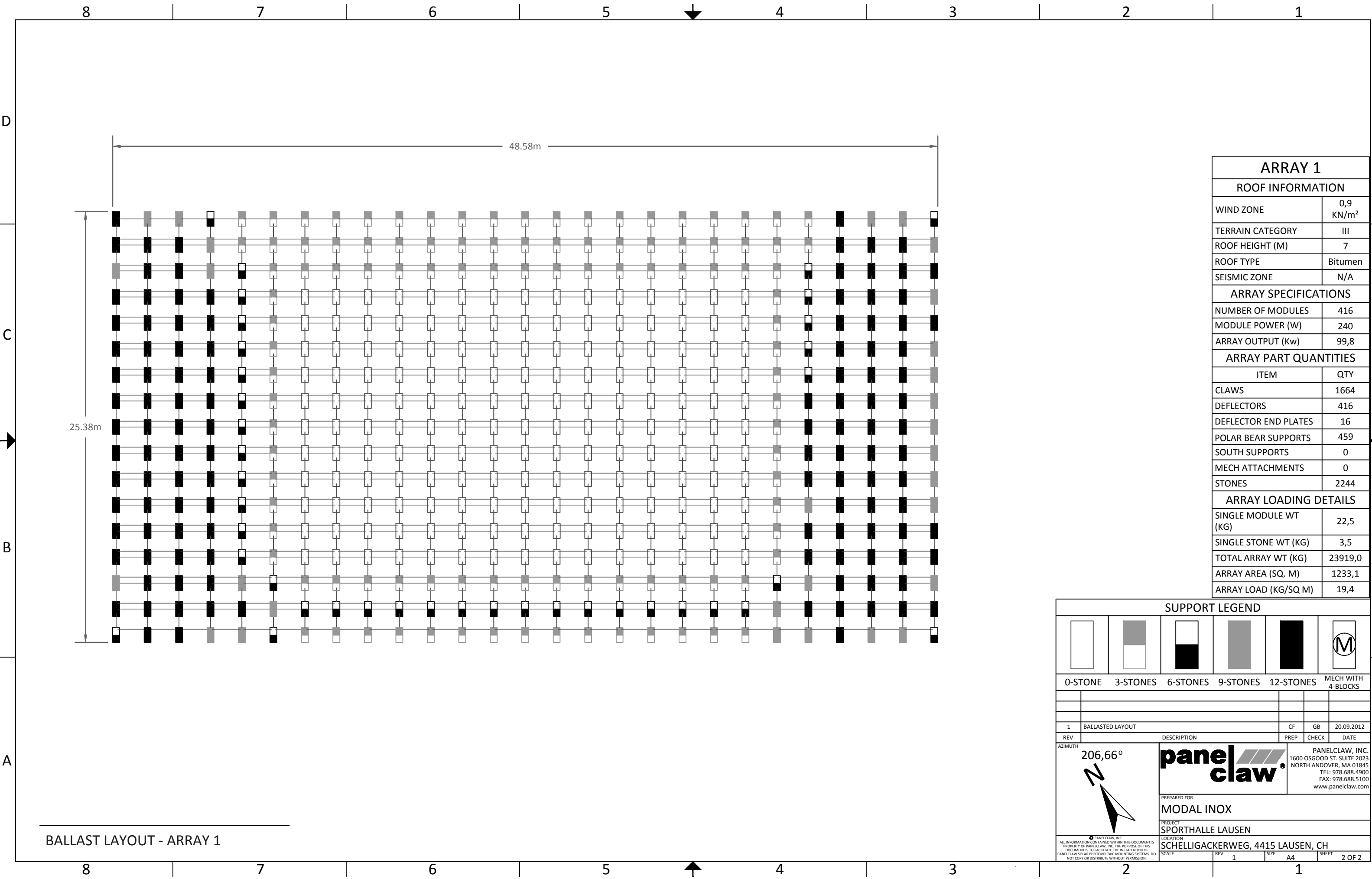
5

4

3

2

1



BALLAST LAYOUT - ARRAY 1

ARRAY 1	
ROOF INFORMATION	
WIND ZONE	0,9 KN/m <sup>2</sup>
TERRAIN CATEGORY	III
ROOF HEIGHT (M)	7
ROOF TYPE	Bitumen
SEISMIC ZONE	N/A
ARRAY SPECIFICATIONS	
NUMBER OF MODULES	416
MODULE POWER (W)	240
ARRAY OUTPUT (Kw)	99,8
ARRAY PART QUANTITIES	
ITEM	QTY
CLAWS	1664
DEFLECTORS	416
DEFLECTOR END PLATES	16
POLAR BEAR SUPPORTS	459
SOUTH SUPPORTS	0
MECH ATTACHMENTS	0
STONES	2244
ARRAY LOADING DETAILS	
SINGLE MODULE WT (KG)	22,5
SINGLE STONE WT (KG)	3,5
TOTAL ARRAY WT (KG)	23919,0
ARRAY AREA (SQ. M)	1233,1
ARRAY LOAD (KG/SQ M)	19,4

SUPPORT LEGEND					
0-STONE	3-STONES	6-STONES	9-STONES	12-STONES	MECH WITH 4-BLOCKS
1	BALLASTED LAYOUT	CF	GB	20.09.2012	
REV	DESCRIPTION	PREP	CHECK	DATE	
AZIMUTH 206,66°				PANELCLAW, INC. 1600 OSGOOD ST. SUITE 2023 NORTH ANDOVER, MA 01845 TEL: 978.688.4900 FAX: 978.688.5100 www.panelclaw.com	
PREPARED FOR MODAL INOX		LOCATION SCHELLIGACKERWEG, 4415 LAUSEN, CH			
PROJECT SPORTHALLE LAUSEN		SCALE	REV	SIZE	SHEET
ALL INFORMATION CONTAINED WITHIN THIS DOCUMENT IS THE PROPERTY OF PANELCLAW, INC. THE PURPOSE OF THIS DOCUMENT IS TO FACILITATE THE INSTALLATION OF PANELCLAW SOLAR PHOTOVOLTAIC MOUNTING SYSTEMS. DO NOT COPY OR DISTRIBUTE WITHOUT PERMISSION.		-	1	A4	2 OF 2